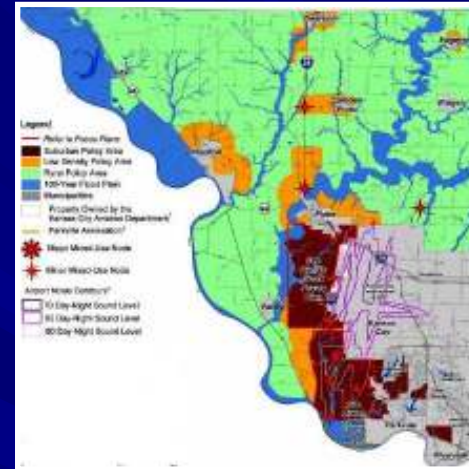


Platte Profile 2020

Growth Patterns

- Adopted first ever County Land Use Plan
- Adopted focus plans for Prairie Creek and Brush Creek watersheds
- Adopted design guidelines for large commercial developments



Platte Profile 2020



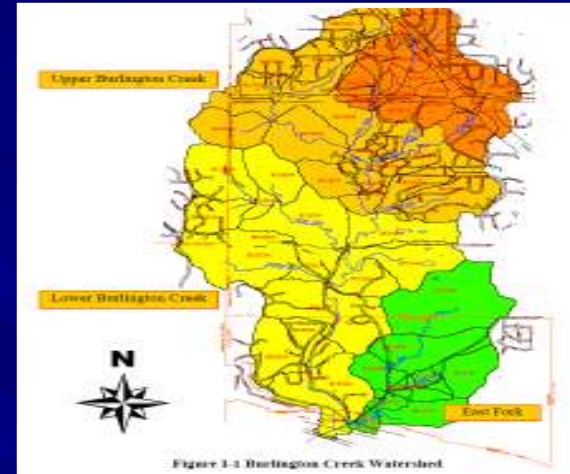
Transportation

- Adopted first ever County Roads Master Plan
- Dedicated funding through voter approved 3/8 cent sales tax
- Numerous road and bridge rehabilitation projects underway

Platte Profile 2020

Infrastructure

- Adopted guidelines for streamway buffers in development
- Created Stormwater Grant program
- Ongoing coordination with local cities and developments



Platte Profile 2020



Parks and Recreation

- Adoption of first ever County Parks System Master Plan
- Dedicated funding through voter approved 1/2 cent sales tax
- Numerous parks, trails and community center and aquatic facilities now complete

Platte Profile 2020

Citizen Participation

- Creation of CitizenCorps program
- Numerous citizen surveys and public forums utilized to guide planning for roads and parks
- Increased utilization of print and electronic media to inform citizens on current issues in County government

